




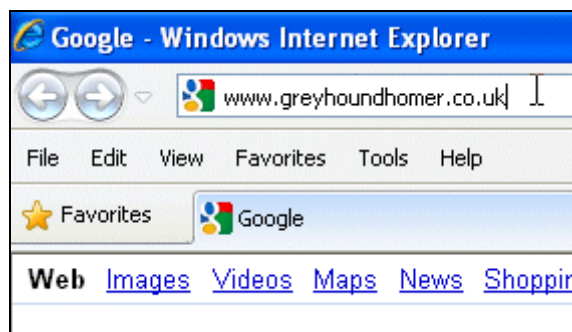
'finding forever homes for Greyhounds'

| Creating a Favourite link in Microsoft Internet Explorer to the Greyhoundhomer RGT forum

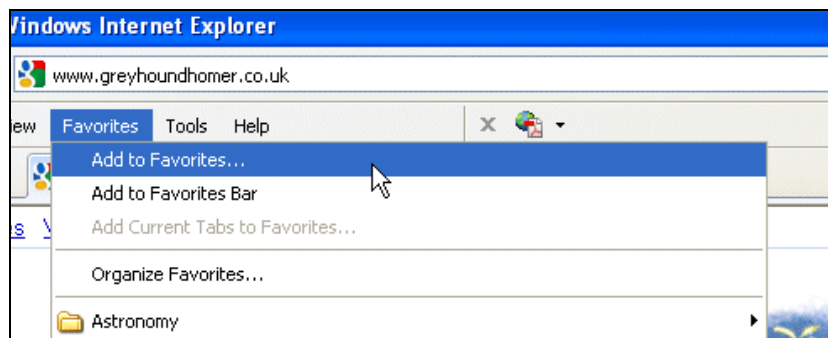
To create an entry in Microsofts Internet Explorer for the Greyhoundhomer RGT forum (or website) please follow these steps:

A favourite for the Greyhoundhomer Website

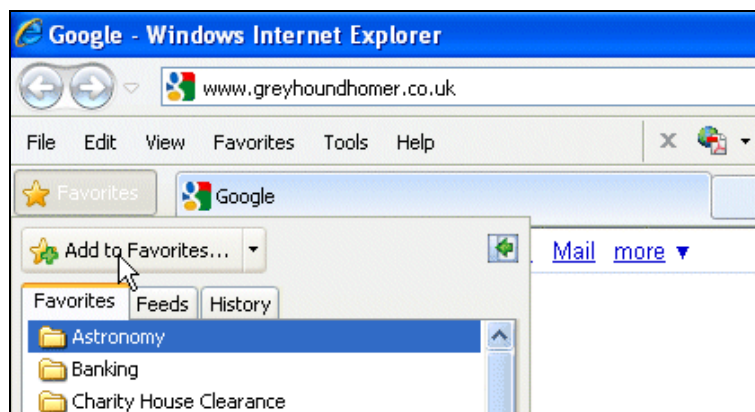
1. Open Microsoft Internet Explorer, by doubling click on  on your desktop.
2. In Internet Explorers address bar type in the address, **www.greyhoundhomer.co.uk**. Then press Enter or Return.



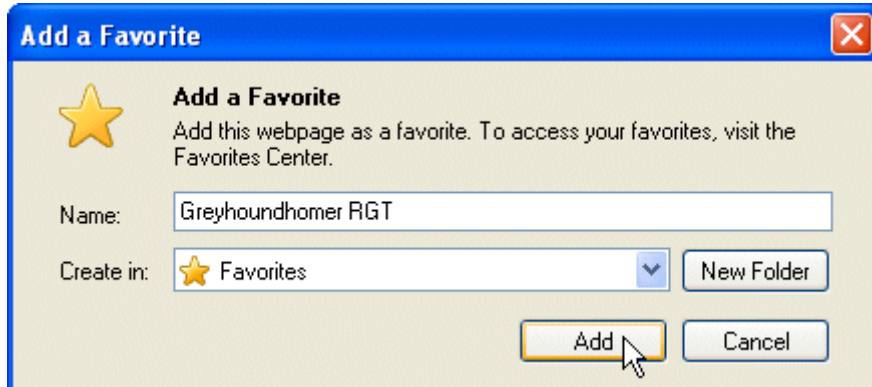
3. When you get to the home page of the Greyhoundhomer RGT website, select the **"Favorites"** drop down menu, or Favourites button next to the first tab.



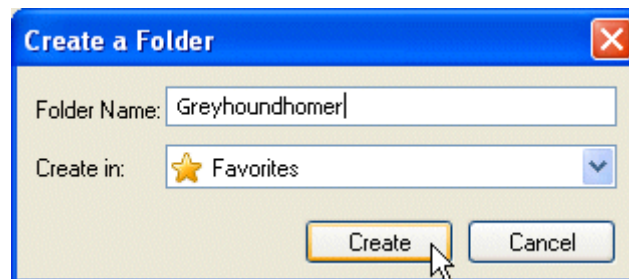
OR



4. At this point you can either click on the “**Add**” button OR you can select **or** create a specific folder for the short cut to the Greyhoundhomer RGT website Favourite.



OR Create a folder, then add the link



5. Creating a direct link to the forum is exactly the same process as above, but instead of entering www.greyhoundhomer.co.uk in the address bar at stage 2, you enter **greyhoundhomer.proboards.com**.

This completes this tutorial, we hope you find it useful, these instructions should work with Internet Explorer versions 5 through to 8